

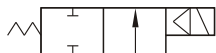
# MUW-F series Normally closed

## SOLENOID VALVE



Model: MUW- 35F, 40F, 50F, 65F, 80F, 100F

Available fluid: Water, air



### Specification :

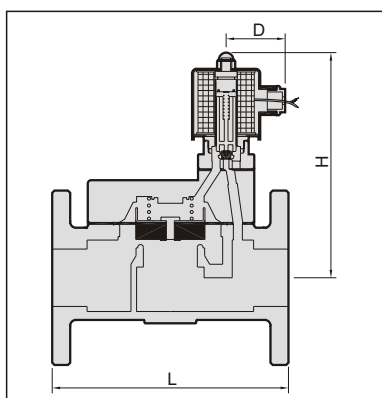
- 2-WAY normally closed solenoid valve.
- Type MUW-F is normally closed, can direct operating without pressure.
- Available fluid: Water, Air
- Standard voltage: AC 110V/220V (50/60 Hz).
- Voltage is with  $\pm 10\%$  differential.
- Other voltage of AC/DC available when required.
- Small size, high flow, little electric power required.
- Installation: Mountable in leave position only.
- Standard flanged-end type: JIS 10K(ASA 150lbs).

### Not for fluid of:

- Liquid when heat, solid when cool.
- Corrosive fluid.
- Viscosity over 20 cst.
- Temperature over 80°C.

### Caution:

- Pipes must be washed neat and clean before fitted.
- A Y-STRAINER has to be installed in the front of solenoid valve, that is best for long life.



### Material:

Parts name	Material
Body	Cast iron (FC 20)
Bonnet / nut	Cast iron (FC 20)
Coil	Special copper wire
Diaphragm	N.B.R.
Disc	N.B.R.
Spring	St. st. 304
Fixed steel	Special st. steel

Model (order code)	Connection pipe size (flange type)	Cv	Orifice (mm)	Fluid temp	Max. operating pressure diff. kgf/cm <sup>2</sup>						L (mm)	H (mm)	D (mm)	Weight (kg)
					Steam	Water	Air	Oil	Gas	Vacuum				
MUW-35F	1 1/4"	22	35	-5°C ↓ 80°C	-	0.5~8	0.5~8	-	-	-	200	224	58	8.8
MUW-40F	1 1/2"	30	40		-	0.5~8	0.5~8	-	-	-	200	226	58	9.4
MUW-50F	2"	40	50		-	0.5~8	0.5~8	-	-	-	210	246	58	11
MUW-65F	2 1/2"	68	65		-	0.5~8	0.5~8	-	-	-	240	278	58	15
MUW-80F	3"	102	80		-	0.5~8	0.5~8	-	-	-	300	295	58	20
MUW-100F	4"	180	100		-	0.5~8	0.5~8	-	-	-	340	325	58	30

※ The pressure ratings indicated above are based on AC110V/220V. The maximum pressure may vary in case on DC/AC24V.  
Special order: AC380V, 415V, 440V.